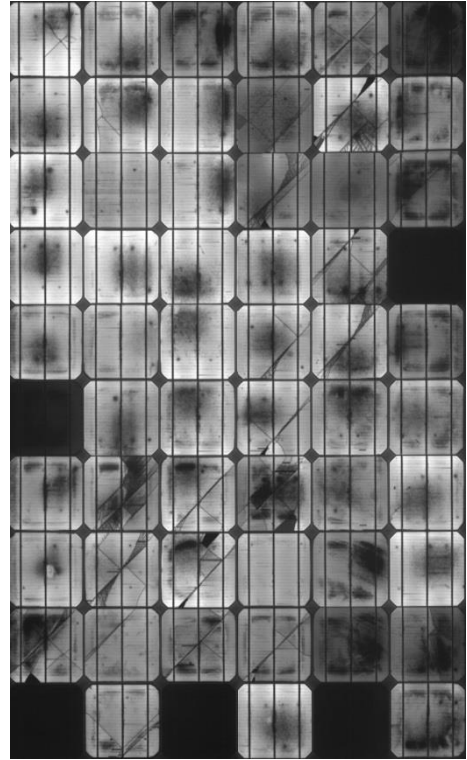
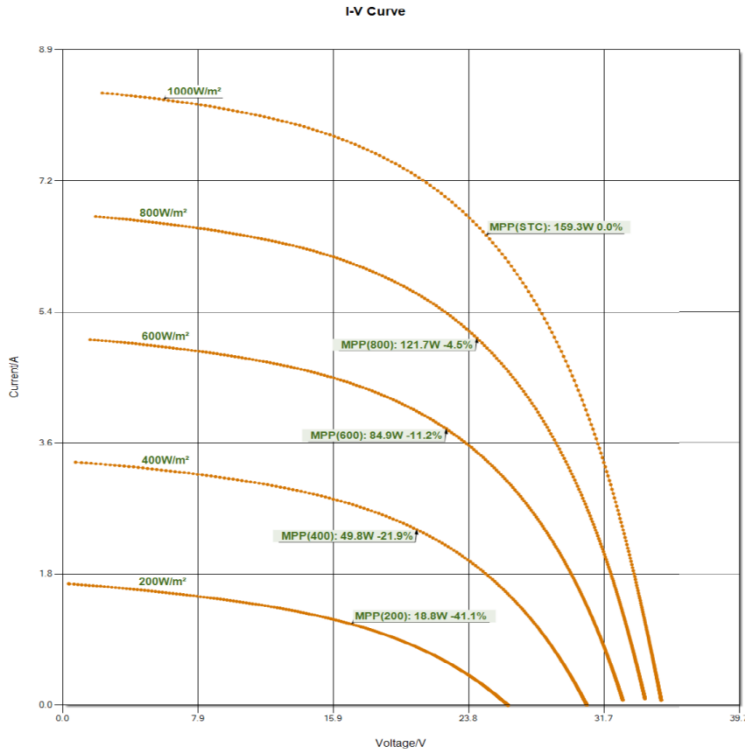
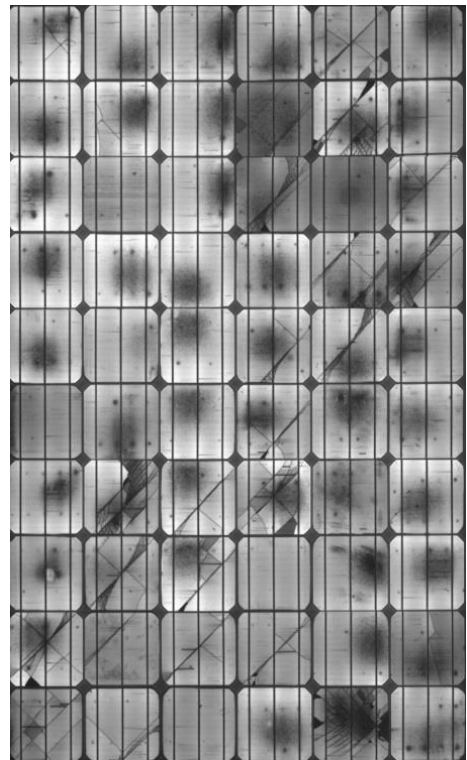
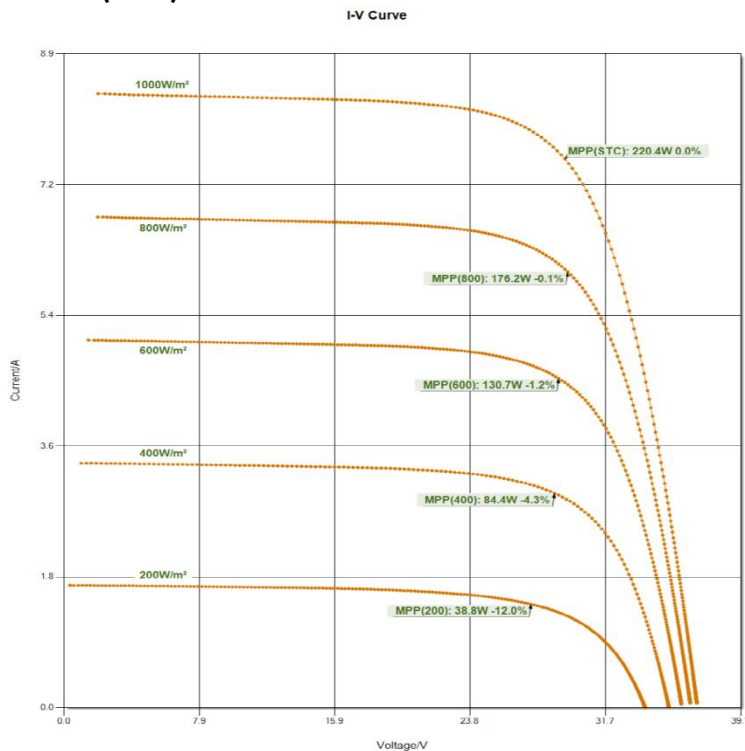


PID Healing with **LUMEN PID** BOX MINI

Example 1:
At Start (0 h) 159.3 W

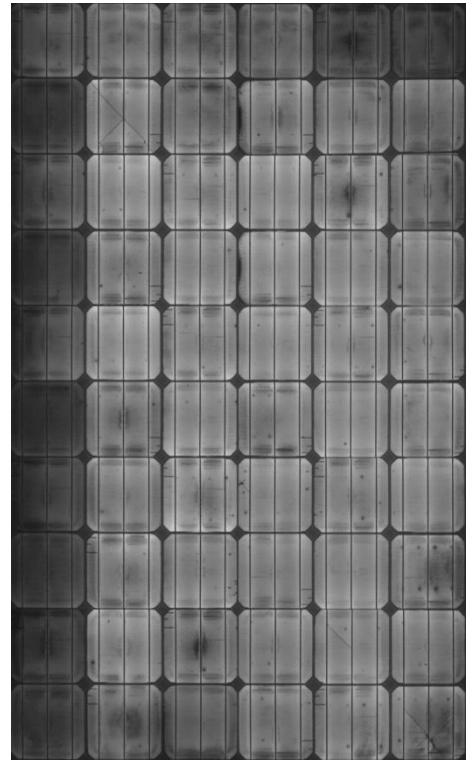
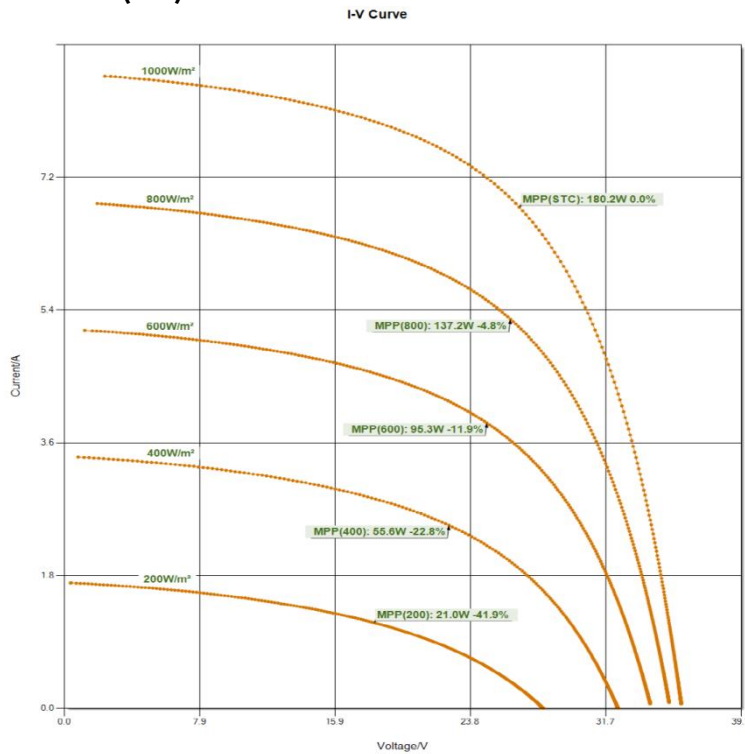


At End (45 h) 220.4 W

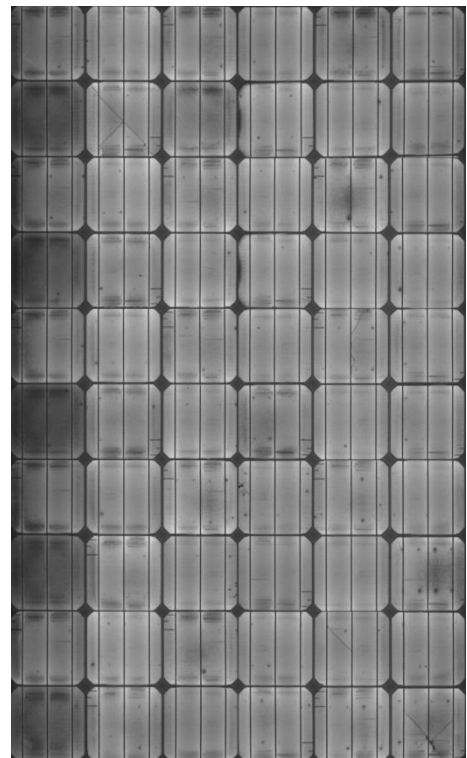
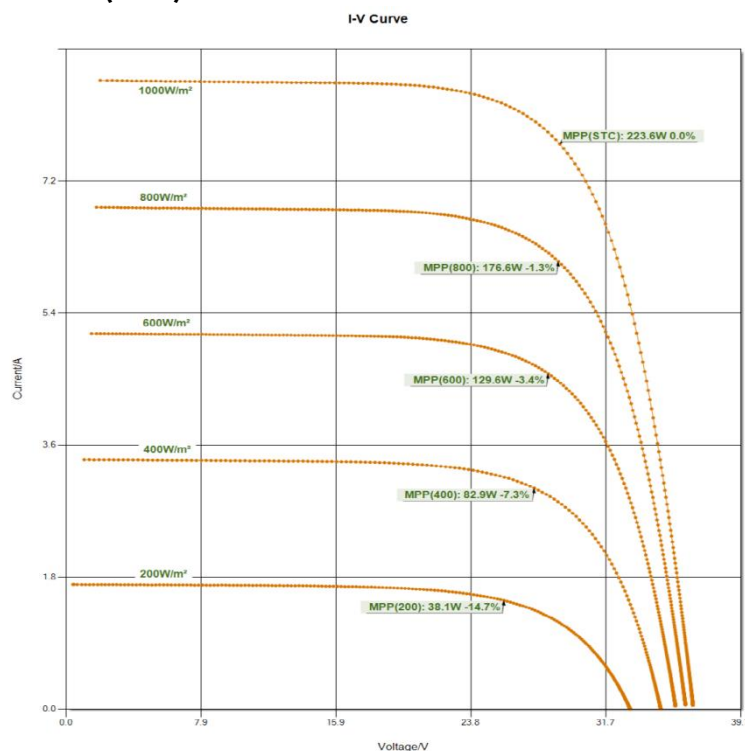


➔ 61.1 W refurbished within 45 h

Example 2:
At Start (0 h) 180.2 W



At End (45 h) 223.6 W



➔ **43.4 W refurbished within 45 h**

The *Mobile Lab* allows to check modules for PID (potential induced degradation) using IV curve measurement at different irradiation levels and taking EL pictures. In the EL the PID affected cells appear black/ darker. The lowlight behavior of PID affected modules is worse, it results in up to 45 % less efficiency in comparison to STC (Standard Test Conditions: 1000 W/m², 25°C, AM 1.5).